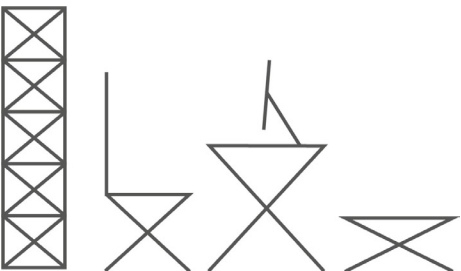


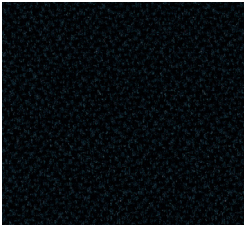
MATERIAL DATA SHEET

# FABRICS

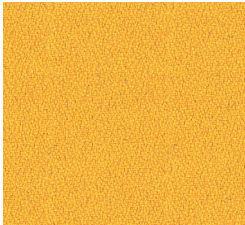


**tunaofis**

# CATEGORY 1 LUCIA



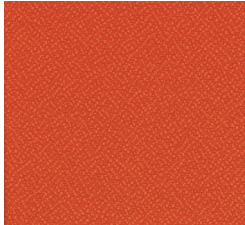
YB 009



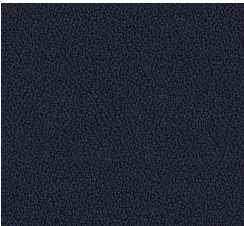
YB 088



YB 046



YB 087



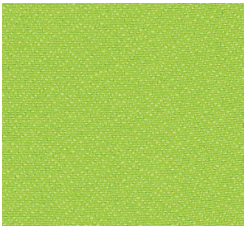
YB 026



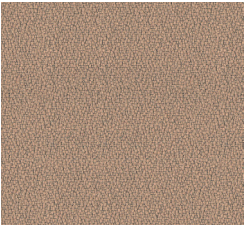
YB 105



YB 092



YB 135

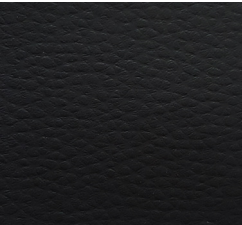


YB 302

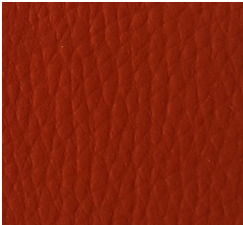
Material: %100 polyester  
Weight: 270 gr/m<sup>2</sup>  
Company: Camira  
Origin: England

# CATEGORY 1

## ARTIFICIAL LEATHER



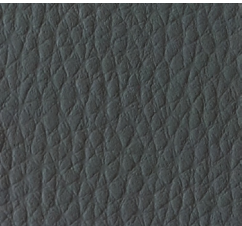
TUNA-01



TUNA-14



TUNA-06



TUNA-10



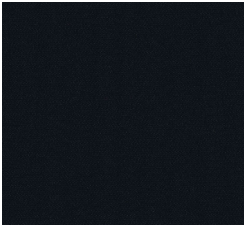
TUNA-09



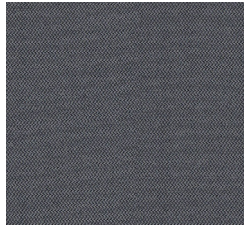
TUNA-02

Material:  
%1 polyurethane  
%74 pvc  
%25 textile

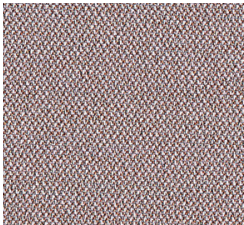
**CATEGORY 1  
ERA**



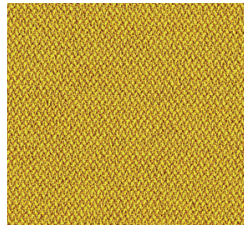
CSE 14



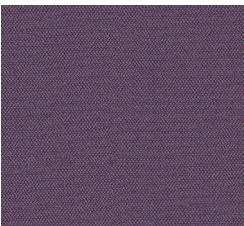
CSE 13



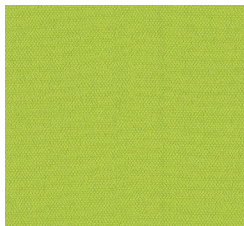
CSE 23



CSE 32



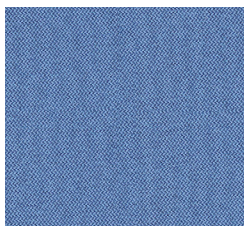
CSE 09



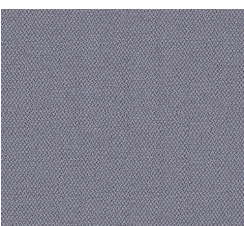
CSE 07



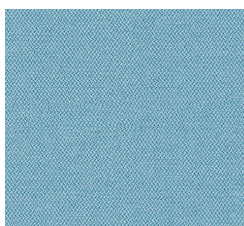
CSE 45



CSE 08

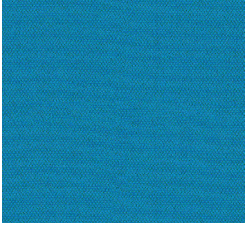


CSE 11



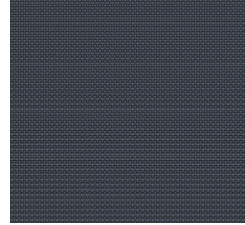
CSE 20

# CATEGORY 1 ERA

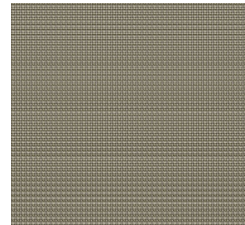


CSE 10

# CATEGORY 2 URBAN PLUS



YN 207

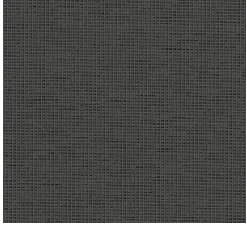


YN 212

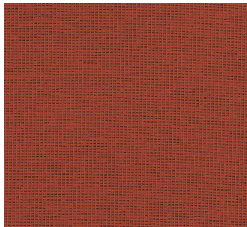
Material: %100 polyester  
Weight: 320 gr/m<sup>2</sup>  
Company: Camira  
Origin: England

Material: %100 recycled flame retardant polyester  
Weight: 340 gr/m<sup>2</sup>  
Company: Camira  
Origin: England

# CATEGORY 2 GRAVITY



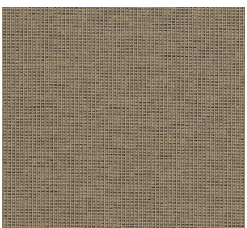
CPC 16



CPC 11



CPC 12

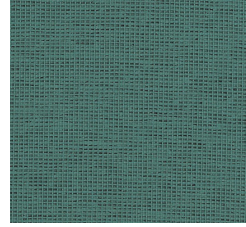


CPC 10



CPC 02

# CATEGORY 2 GRAVITY



CPC 09



CPC 08

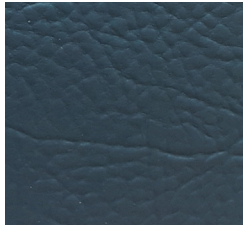
Material: %100 polyester  
Weight: 295 gr/m<sup>2</sup>  
Company: Camira  
Origin: England

# CATEGORY 2 ALK BELLO



620

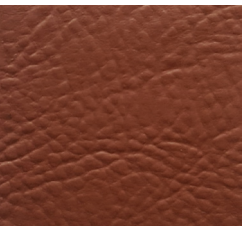
# CATEGORY 2 ALK BELLO



520



220



320



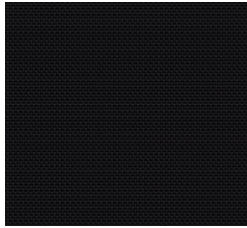
036



590

Material: %100 polyester  
Weight: 270 gr/m<sup>2</sup>  
Company: Camira  
Origin: England

# CATEGORY 2 CHATEAU PLUS



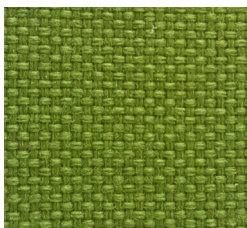
CSP 48



CSP 20

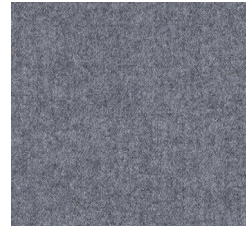


CSP 42



CSP 28

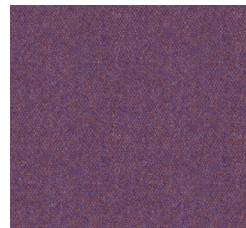
# CATEGORY 3 SYNERGY



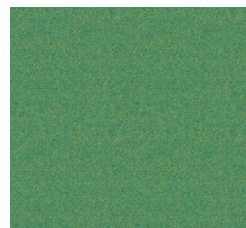
LDS16



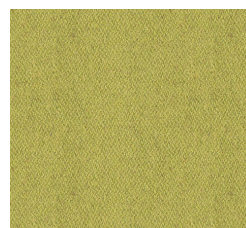
LDS63



LDS66



LDS53

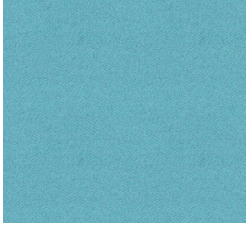


LDS46

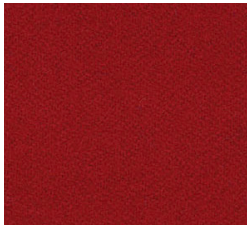
Material: %100 flame retardant polypropylene  
Weight: 225 gr/m<sup>2</sup>  
Company: Camira  
Origin: England



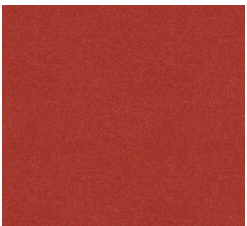
# CATEGORY 3 SYNERGY



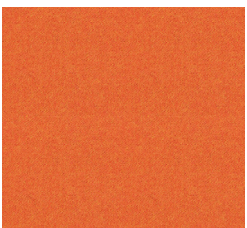
LDS55



LDS86

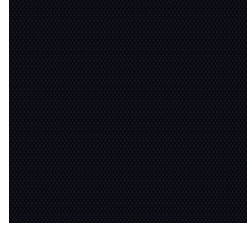


LDS84

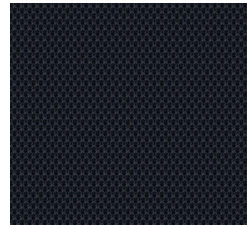


LDS82

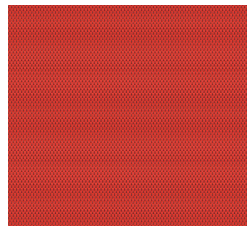
# CATEGORY 3 NEXUS



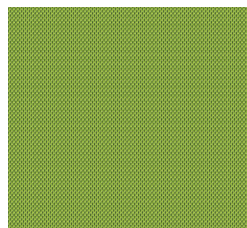
UNY13



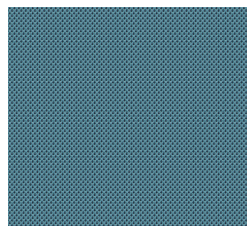
UNY11



UNY04



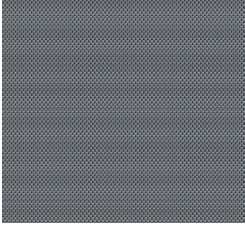
UNY05



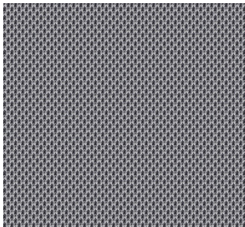
UNY10

Material: %95 wool, %5 polyamide  
Weight: 400 gr/m<sup>2</sup>  
Company: Camira  
Origin: England

# CATEGORY 3 NEXUS



UNY01



UNY02

# CATEGORY 4 GENUINE LEATHER



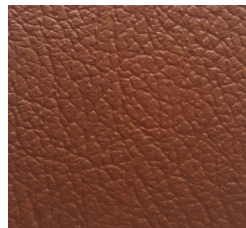
NAPPA 201



DARK GREY



KACKAR 2



812 HAVANA



OTTO BEIGE

Material: %100 flame retardant polypropylene  
Weight: 225 gr/m<sup>2</sup>  
Company: Camira  
Origin: England

**CATEGORY 4**  
**GENUINE LEATHER**



OMAR



FORTUNA

